

How to preserve the natural expressiveness of the face through the dynamic correction with HA

**37th SIME CONGRESS
EUROPEAN CONGRESS OF AESTHETIC MEDICINE
May 2016, Rome**

**Dra. Natalia Ribé
Aesthetic & Andrologist Doctor**

**INSTITUT DRA. NATALIA RIBÉ
BARCELONA SPAIN**

**Dynamic correction:
“Preserved Network Method”**

A new hyaluronic acid gel
“Preserved Network Method” (PNM)
specifically developed and assessed to adapt to
the movements of the dynamic areas of the face: my
personal experience

The aging process

- From the age of 25, the skin needs to be stimulated
- Collagen and elastine production decrease by 70%
- The skin’s support structure is weakened

Dynamic correction: “Preserved Network Method”

The aging face is characterized by effects resulting from:

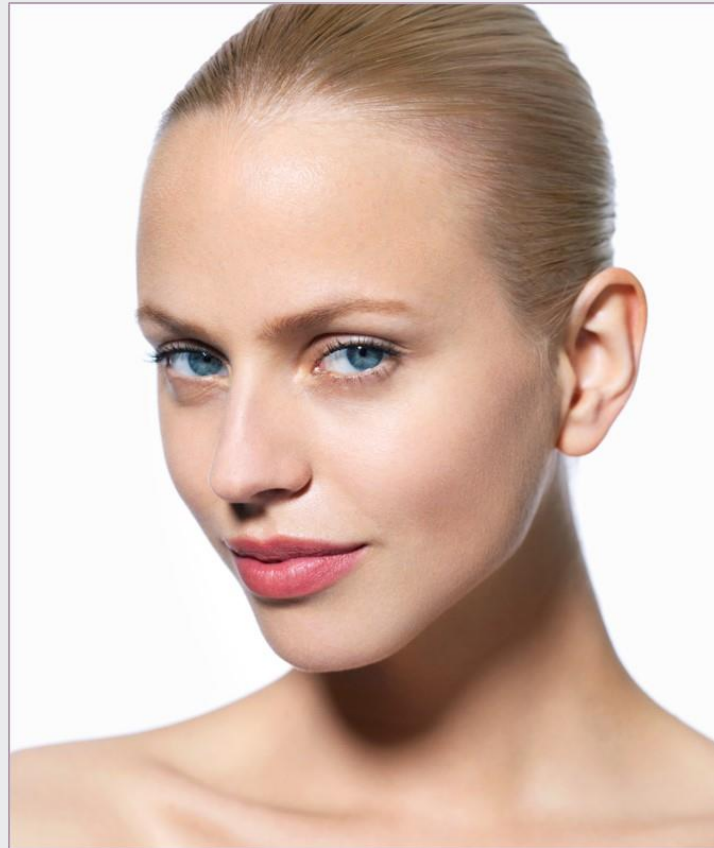
- Mimic activity/dynamic lines
- Gravity
- Volume loss

With the passing of years there is a loss of bone tissue and fat that supports the outer soft tissue

There is a need for a solution that can imitate the natural supporting fat pad, and compensate for the loss of this tissue

**Dynamic correction:
“Preserved Network Method”**

The face is not only static



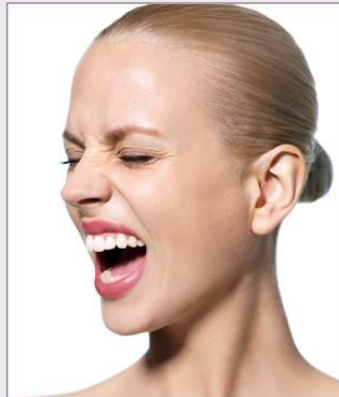
Static = picture

Dynamic correction: “Preserved Network Method”

The face is naturally dynamic



Dynamic =real life



Our face is in constant movement thanks to the elasticity of our skin

Dynamic correction: “Preserved Network Method”

The daily smile and other expressions reflect our emotions and help to reveal who we are, and what makes us unique

Also, the mobile facial areas are the first to be affected by natural aging

The aging face is characterized by effects resulting from:

- Smiling
- Frowning
- General facial expressions: glabellar, frontal and perioral lines

For this reason we need to have a product that corrects this movement

Dynamic correction: “Preserved Network Method”

How to prevent aging?

1. Apply hygienic-dietary measures: lifestyle and skin hygiene
2. Appropriate dermocosmetic products for each type of skin
3. Techniques and protocols for the treatment of skin aging:
 - Medical aesthetic treatments
 - Aesthetic surgery treatment

Dynamic correction: “Preserved Network Method”

Until now we have not had a range of products that work with expressiveness and movement

Now, we have the possibility to use a new range of fillers that will correct the dynamic areas of the face using  “Preserved Network Method”

These gels expand the possibilities of treatment and takes into account the movements of the face

Dynamic correction: “Preserved Network Method”

Skin aging is inevitable but we can slow it down



Now we have a new line of fillers specially designed for the mobile areas of the face

Dynamic correction: “Preserved Network Method”

- The peculiarity of the gel injected is in its patented formula named "Preserved Network Method" which respects the natural structure of long chains of hyaluronic acid, keeping the natural and mobile bonds and creating anchor points with a percentage of BDDE inferior to that of the traditional method
- The average BDDE in all dermal fillers is between 5% and 10%. In HA PNM range it is from 1.9 to 4%
- Hyaluronic acid, thanks to a lower quantity of BDDE, preserves its natural viscoelastic properties, and consequently has a more dynamic structure with a long lasting correction up to 18 months
- After the injection, the treated areas regain tone and the face looks radiant

Dynamic correction: “Preserved Network Method”

MY EXPERIENCE

We currently have in the market several products to slow down and to decrease the effects of aging:

- Preserved Network Method
- Other fillers
- Other products

In my case depending on the characteristics of each patient (skin, age,..)
I select the best one to achieve the best results

Dynamic correction: “Preserved Network Method”

A new and unique HA range specially designed to keep the dynamism of the face

- A new, exclusive and effective cross linking method preserving long HA chains in a mobile network: adapted to fine and moderate wrinkles and depressions thereby giving a volumizing effect
- Unique resilience properties of the gels: resists compression and stretches with the movements
- We achieve natural, immediate and long-lasting results in dynamic areas of the face with little product quantity in 1-2 sessions

Dynamic correction: “Preserved Network Method”

ADVANTAGES OF THE PRESERVED NETWORK METHOD

- Less BDDE needed for cross-linking
- Higher durability/stability in the long term because of its high strength value
- Easier handling by the doctor and more comfort for the patient
 - Minimal extrusion force and remarkable fluidity of the product
 - Easy integration of the product within the injected tissue – immediate correction of the wrinkle without lumps/irregularities
 - No feeling of the product after injection

Dynamic correction: “Preserved Network Method”

NEW RANGE OF FILLERS

- HA A : a semi-crosslinked AH with 1.9% of BDDE

Superficial wrinkles of the face, neck and neckline. Ideal for the perioral area

- HA B : a AH with 3.1% of BDDE

Moderate wrinkles. Ideal for the periocular region

- HA C : a AH with 3.6% of BDDE

Deep wrinkles. Ideal for the nasolabial folds and marionette lines

- HA D : a AH with 4 % of BDDE

Volume in extended areas. Ideal for the cheeks and contours of the face

Dynamic correction: “Preserved Network Method”

Considering that we have mobile facial areas, it is essential to have in our daily practice a range of HA that respects facial expressions

Thanks to the quimical particularities of this type of HA , the results achive are:

GENERAL CONCLUSIONS ABOUT “PRESERVED NETWORK METHOD”

Dynamic correction: “Preserved Network Method”

GENERAL CONCLUSIONS ABOUT “PRESERVED NETWORK METHOD” (BASED ON THE RESULTS FROM FIRST EUROPEAN CLINICAL TRIAL)

- Adapted for facial movements without feeling the product
- Good integration of the product without irregularities
- High level of hydration
- Useful to treat superficial wrinkles (bar code, crows feet, marionette lines etc)
- Soft, and very easy to use (less extrusion force needed)
- Fewer side effects: edema, or swelling and no pain felt by patients
- Perfect and long lasting results, around 12-18 months
- Both patients and doctors very satisfied

NR
INSTITUT
DRA. NATALIA RIBÉ



Thank you very much
nribe@institutnataliaribe.com